



T: +974 40029922, +974 30567679

E: [sales@tzdglobal.com](mailto:sales@tzdglobal.com), W: [www.tzdglobal.com](http://www.tzdglobal.com)

Po. Box 2780, Doha, Qatar

## Project Management

Unique Project Management System Leads to a Successful Project Completion

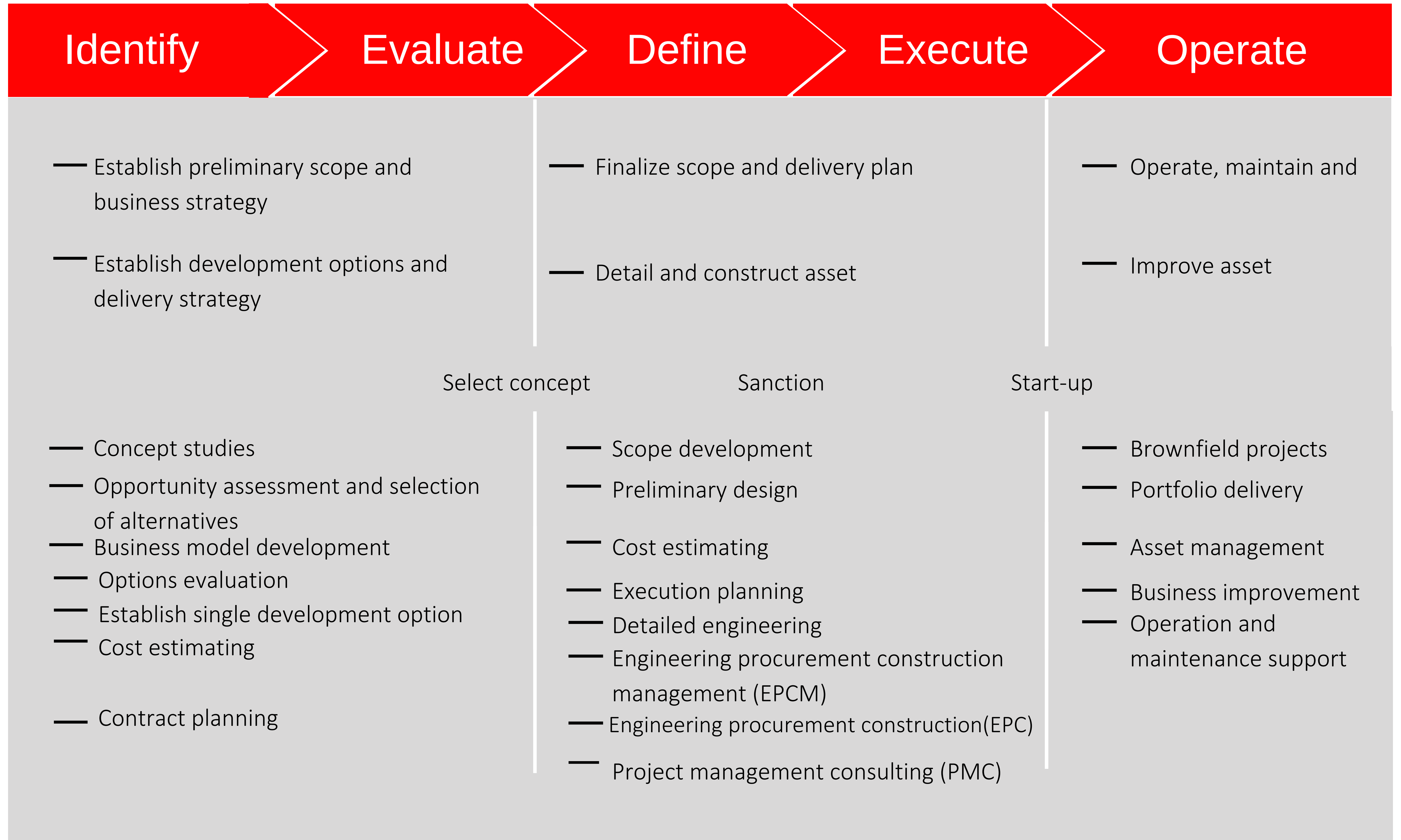




— “ —

Our Phased Approach enables consistent project delivery region wise.

— ” —



“ TZD Global is a leading regional provider of professional project and asset services in the energy, chemicals and resources sectors. ”

We cover the full project lifecycle from guiding our customers with pioneering project to finding innovative ways of sustaining and enhancing their existing assets. Our presence enables us to leverage global expertise and deliver innovative solutions locally to meet our customer's needs. Through our safety culture our enterprise-wide integrity management framework, we establish corporate expectations for Zero Harm to people, assets and no environmental incidents, delivering predictable, consistent outcomes across the entire business. Our safety culture underpins all our business activities and starts with a personal commitment from everyone who work for us, regardless of location or role.

We are committed to delivering sustained economic and social progress, creating opportunities for individuals, companies and communities to find and realize their own futures, while also creating wealth for our shareholders.



# What we do ?

A photograph of an industrial facility, likely a refinery or chemical plant, at night. The scene is illuminated by warm, orange-red lights, creating a dramatic atmosphere. The image shows a complex network of pipes, scaffolding, and large cylindrical tanks. A tall, slender distillation column stands prominently in the center. The sky is a deep, dark red, suggesting a sunset or sunrise. The overall composition is industrial and technical.

- Consulting
- Engineering
- Supply chain Management
- Construction Management
- Construction & Fabrication
- Project Management Services
- Maintenance, Modification & Operation

# Consulting

TZD Global is your entryway to expertise in Project Management, Engineering, Procurement, Construction, shipping & Logistics services and we offer customers a wide range of consulting and advisory services.

We cover the full lifecycle, from creating new assets to sustaining and enhancing operating assets, in the hydrocarbons, water treatment, chemicals sectors.

Through our global consulting business, we provide a true end-to-end offering for customers, with approximately 100 consultants across regions integrating strategy, management and technical consulting expertise.



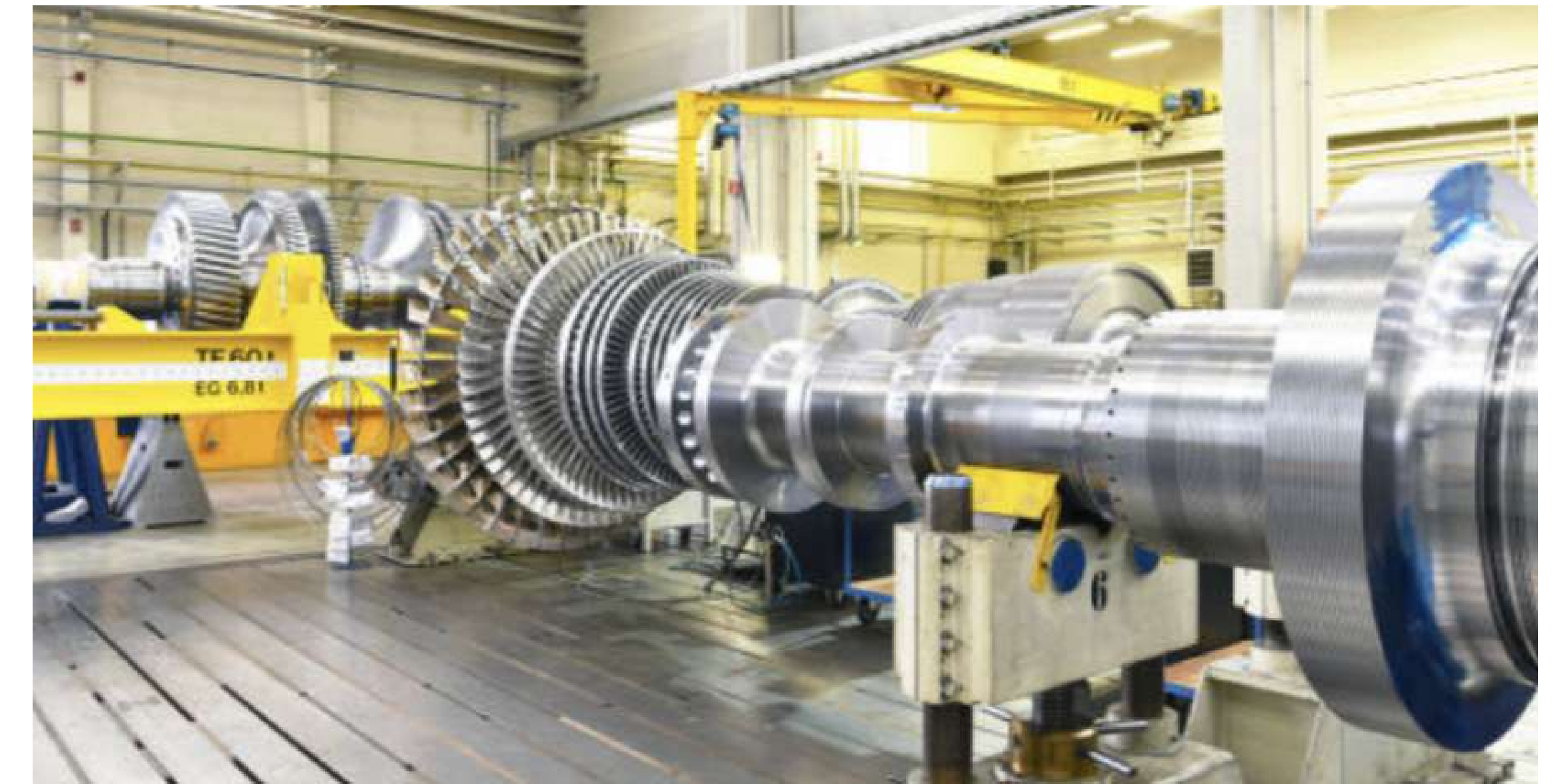
Providing the advice and partnering with customers to implement it, TZD Global is a practical, innovative, results-driven organization with a singular focus on the success of its customers.

Our consultants draw on their world-class, cross-industry experience and they can be engaged through the project lifecycle, adding value from the early phases of project development through to decommissioning and post-closure.

# Engineering

TZD Global's unique approach to safe and sustainable engineering means that we are skilled at developing behaviors and solutions that meet every aspect of our customers' needs. We provide complete, cost-effective global solutions while addressing the critical engineering challenges faced by our customers in today's world.

The breadth and depth of our experience is demonstrated across the core disciplines of process, civil, structural, mechanical, layout and piping, electrical and instruments and controls. Our engineers are also supported by many specialist teams including design safety, environmental, pipelines, Control systems and materials.

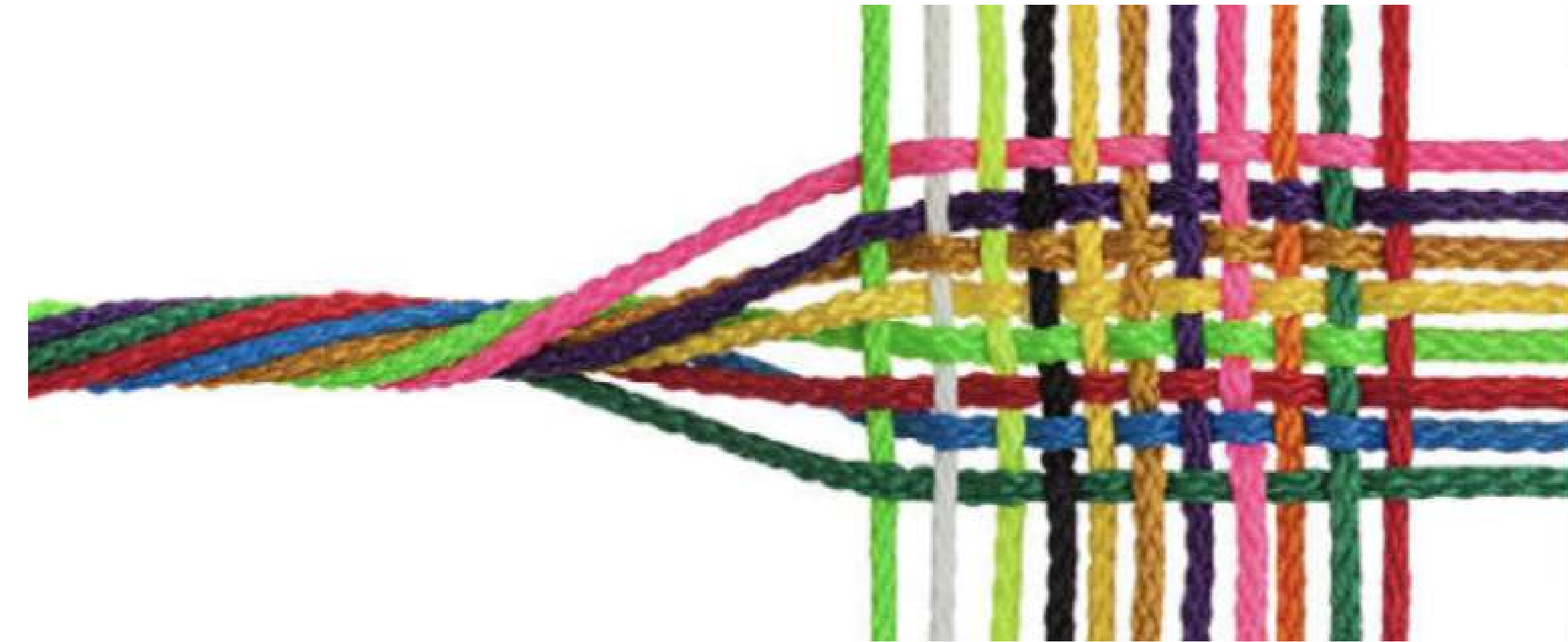


Our work processes ensure that risks to all project stakeholders, inclusive of those impacted by the project during operations, maintenance or even decommissioning are identified, mitigated and communicated. We ensure that our designs are technically compliant with statutory and customer requirements, safer to build, operate, decommission or dispose of, address human factors and provide an appropriate sustainable solution.



# Integrated Engineering

We are experts in assessing and integrating complex process technologies, ensuring the best solution for our customers. We retain a high degree of independence from technology providers, although within specialist areas we can offer our own world-class process technologies.



Our approach to integrated engineering design and data management systems incorporates customized value-adding processes and automation, while retaining flexibility to allow efficient use of the major engineering software solutions preferred by the industries we service. Recognizing the importance of data to our customers, our systems ensure the capture and handover of information to support asset lifecycle management.



We work closely with our customers and take time to understand exactly what the customer requirements are, and the detailed nature of problems to be solved. Understanding that is key to delivering projects efficiently, and exceeding our customer's expectations.



TZD Global employee's has a proud history of delivering engineering projects as part of its core business for more than 10 years, efficiently delivering small to medium project solutions, to all our customers across the global.



# Supply Chain Management

TZD Global 's focuses on providing end-to-end supply chain solutions to its customers in order to improve project delivery outcomes and reduce execution risks.

We integrate our customers' objectives concerning safety in the supply chain, ethical business practices, total cost of ownership optimization, schedule compliance and uncompromising quality into our proven processes and systems. This allows us to deliver and manage the right goods and services, safely and sustainably, at the right location and right times.



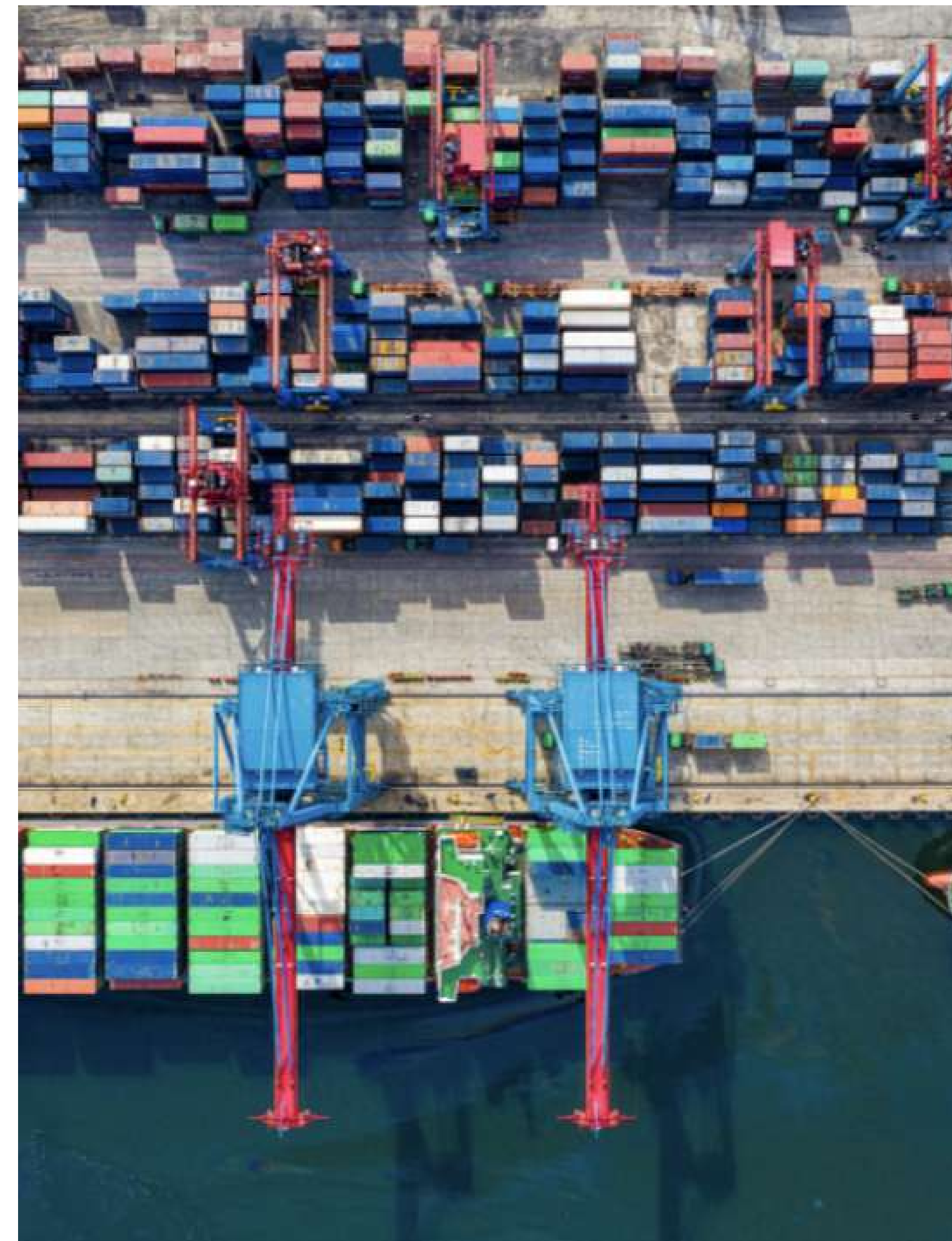
TZD Global 's India sourcing hubs provide customers with world-class solutions that deliver across the crucial triad of price, schedule and quality.

Services available from the sourcing hub cover the entire supply chain spectrum, from providing strategic advice on which material to potentially source from emerging markets to procurement, expediting, inspection, logistics management and warehousing and preservation.



## Logistics management

As part of our Supply Chain Management services offering, we provide complete logistics management services for customer projects, both medium and small. Early engagement improves the quality of logistics planning and allows for the identification of logistics-limiting factors such as a lack of local transportation infrastructure and/or 'immovable' environmental restrictions, which can have a major influence on project cost and schedule.



Our international network of logistics partners and carriers provides cost-effective options to ensure safe and successful movement of modules, compressors, turbines, columns, pressure vessels, air coolers, valves, subassemblies and bulk materials to remote locations around the world. While our logistics professional coordinate the flow of materials, handle restrictions in difficult or remote areas, manage site operations, provide flexible options and stage supply lines to meet exacting deadlines.



# Construction Management

The key to our long successful history in construction execution is flexibility. Not constrained by any company model, we consider each opportunity a stand-alone effort, which requires a unique approach to the construction of the project. We understand that every project faces a unique set of challenges and changes, and provide our customers with the confidence that we can adapt to a changing environment.

TZD Global provides comprehensive construction management throughout the full lifecycle of the project to yield the greatest possible benefits to our customers. From pre-construction execution planning and constructability during front-end design and detailed engineering and implementation of safety and quality processes during construction and commissioning through to the development of procedures and manuals during handover, we have established ourselves as leader in construction services.



We offer advanced work packaging to improve productivity, quality management, contracts development and administration, procurement and material handling, HSE management, commissioning and start-up support. We do this using state-of-the-art tools for systems completions and turn-over, supply construction, commissioning and start-up. These distinct offerings have established work processes, procedures and guidelines that enable us to provide consistent high performance construction execution across the globe in multiple markets. Our experience spans from the Canada, North America, Asia, Middle East. These extreme location projects require expertise to design and build safe, cost-efficient facilities, which have minimal infrastructure, a scarcity labour and logistics chains.

# Modularization Solutions

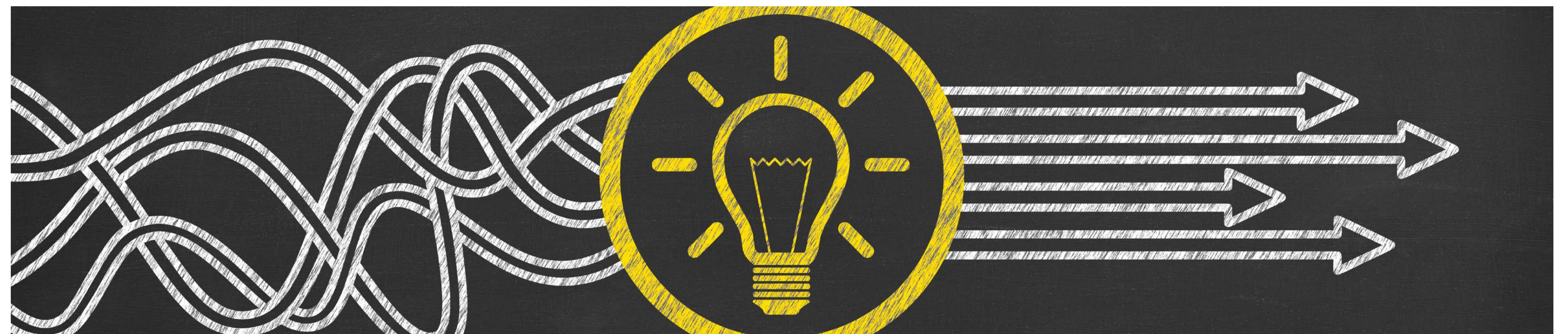
The Offshore Oil & Gas industry has worked within a space-constrained, modular Environment since its beginning. As a leading global provider of design services to the offshore industry, we can bring this expertise to land-based plant design. For example, offshore volume-to-weight densities can be applied in an onshore context, allowing customers to realize the full potential of a modular execution strategy.



TZD Global has a long and deep history using modularization, providing innovative and first-of-a-kind modular construction solutions to solve the unique challenges associated with our customer's projects.

Through modularization we are able to,

- Reduce overall total installed cost
- Deliver cost and schedule certainty
- Remove work from hostile/extreme environments
- Minimize disruption to existing brownfield operations



# Construction & Fabrication



Through our integrated teams, we deliver construction approaches to support your project and business objectives including modularization, stick built and pre-fabrication methodologies.



# Construction

A leader in integrated project delivery, we work alongside our customers to deliver the best solutions on their EPC/CM, construction management and stand-alone construction projects.



Making data-driven intelligence a part of our integrated project delivery methodology, our expertise includes delivering on-budget, on-schedule projects leveraging the application of in-house programs.



# Manufacturing and Fabrication

With experienced craft professionals, we manufacture custom-made pipework, metalwork, joinery, control and electrical panels including CE, as well as module construction and assembly, and pipe fabrication from our own facilities, both on and off client sites. Globally, we deliver ongoing support to our own team on construction, maintenance and turnaround projects, as well as stand-alone packages supplied directly to customers.



# Project Management Services

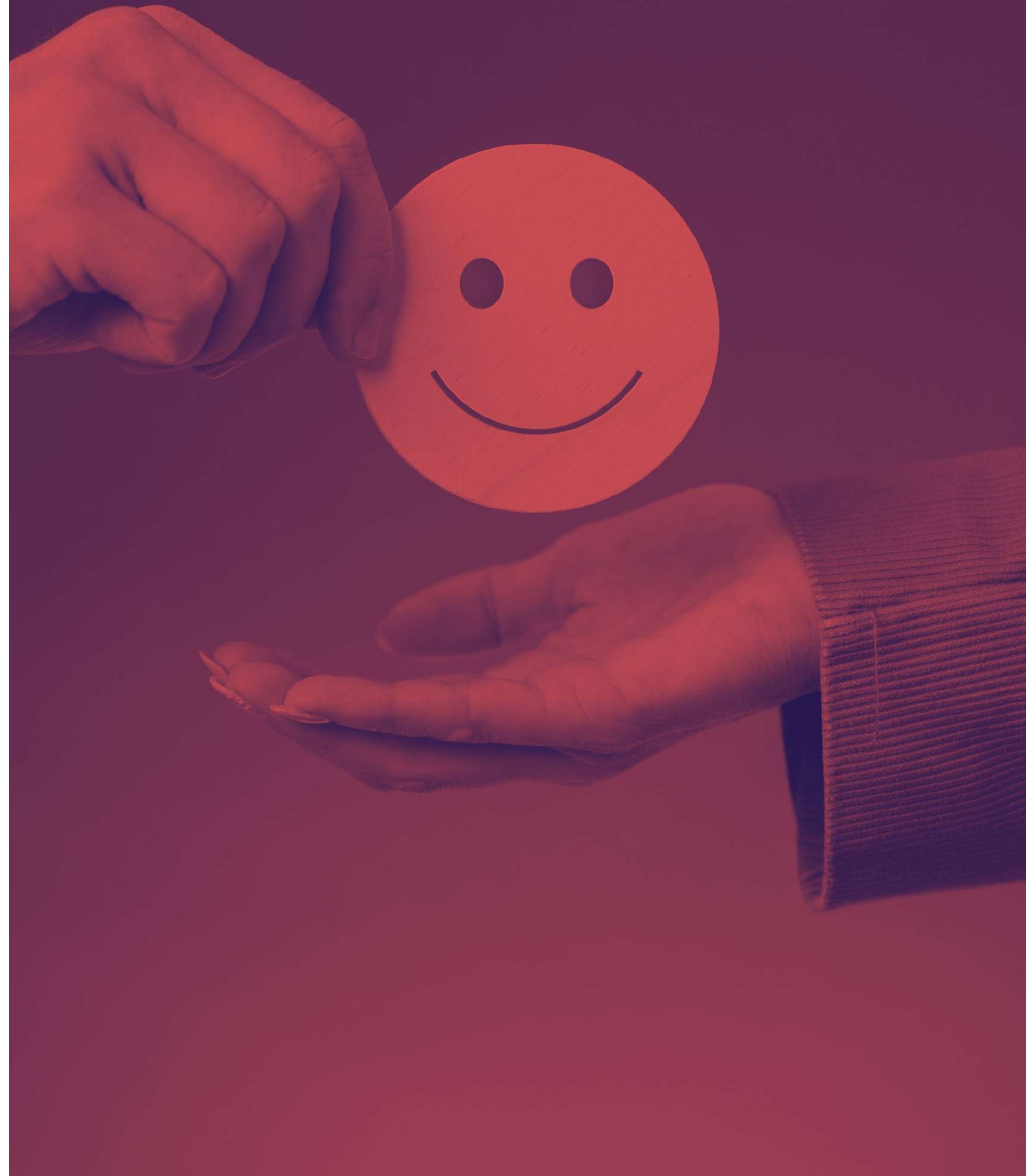


We help our customers realize the maximum value of their project delivery by converting high-potential value options identified in the conceptual phase into fully defined, safe and successfully executed ones. We offer a full range of project management consultancy capabilities and experience and our comprehensive and effective project management system is flexible enough to accommodate small scale through to multi-million dollar projects.



Our past performance demonstrates our comprehensive ability to deliver projects for customers facing a variety of challenges, including tight schedules, remote and logistically constrained sites and unique or innovative environmental or technological considerations. Our extensive experience in managing medium projects means we have a good knowledge of engineering, procurement, construction contractors around the world and their capabilities.

## Complete Customer Service



Our project management teams are created from a deep pool of capable and experience people located all around the world. In their work, they are supported by a world-class suite of tools, processes and project management systems to ensure services are delivered consistently and in accordance with best practices. We show our customers how to optimize the technical scope, capital cost, schedule and execution plans for project developments.

This includes appropriate front-end loading to maximize the value in the investment decision, prior to project sanction, to ensure that the decision-making process is robust.





# Maintenance, Modifications & Operations

TZD Global 's systems and processes for maintenance, modifications and operations are designed to deliver value on a long-term basis and are tailored to each individual customer's needs and contract requirements. We are committed to delivering demonstrable value year on year through our long-term customer relationships. For maintenance, modifications and operations (MMO) projects, we can establish an integrated team who are focused on achieving our customer's objectives while reducing costs, adding value and improving the whole of life value of their assets. We also help our We undertake early and joint front-end project selection and capital planning to prioritize the portfolio of projects and we present business cases to ensure projects with the highest return on investment proceed. We then suggest changes to the capital plan to realize the full value and service potential of the capital works program



We undertake early and joint front-end project selection and capital planning to prioritize the portfolio of projects and we present business cases to ensure projects with the highest return on investment proceed. We then suggest changes to the capital plan to realize the full value and service potential of the capital works program

## Operations, maintenance and turnarounds

We also have extensive experience in refurbishing buildings and equipment to bring them up to current standards, prolonging the asset life and reducing costs.



On many of our sites, we execute small capital construction projects, ongoing maintenance and turnarounds with large teams, often surpassing 200 people, with shared management and support services. On the other sites, we provide niche services with management and support from a central location. Providing a flexible and integrated maintenance solution means we adapt to support the needs of the facility. Execution turnarounds as large as 10,000 work hours, we are good in turnaround delivery with a proven, standardized, in-house process for evaluating the status of turnaround planning.

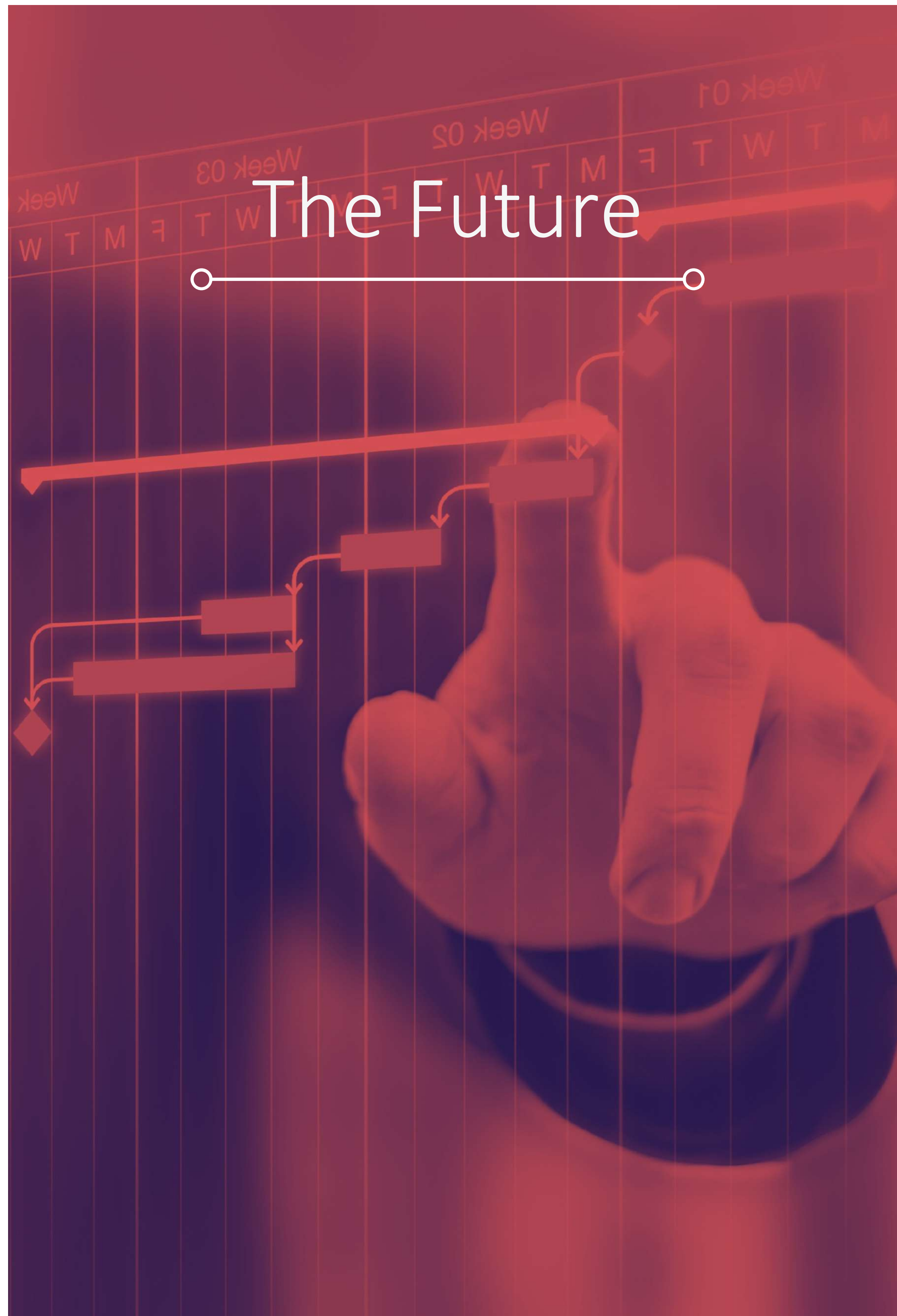
## Fleet, tools and equipment

Supporting our construction, maintenance and turnaround projects requires a progressive tool, fleet and equipment program. We effectively manage the provision of vehicles, small tools and larger equipment, such as bundle-pullers, in the way that best suits our customer's unique needs. Our extensive program includes tool management, training and systems, delivery and ongoing maintenance.



Our full project lifecycle of services includes a wide range of post-construction management and validation services, including inactive and active commissioning, start-up and turnover. Our team provides services integrated into our end-to-end solution as part of EPC/CM., PMC and construction projects. We also perform these services as a stand-alone offering





A dynamic 12 months for TZD Global has set the stage for an exciting period ahead as we continue to help our customers meet the world's changing resources and energy needs.



## Here's how we plan to do it:

### Horizon-01

Core growth



Onshore projects



Offshore projects

### Horizon-02

Growth Potential



Chemicals & Petrochemicals



Minerals & Metals



Maintenance,  
Modifications and  
Operations (MMO)

### Horizon-03

Emerging markets



New Energy



Digital (Internal &  
External)